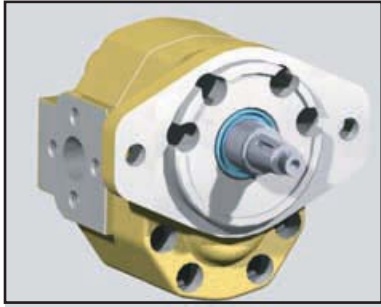


# GROUP 3

DATA

# GEAR PUMPS WARYŃSKI SERIES

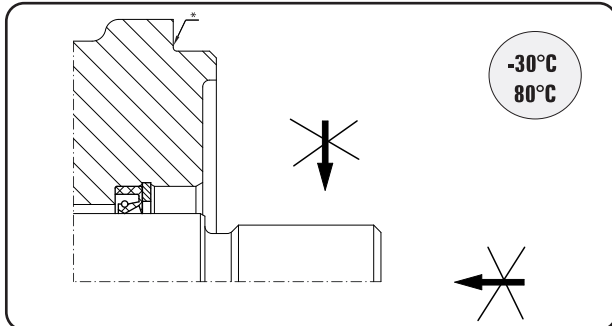


Model	Px3-15	Px3-20	Px3-25	Px3-35	Px3-40	Px3-46	Px3-55	Px3-64	
Displacement [ccm/rev]	15,0	20,0	26,4	34,9	39,9	45,8	54,9	64,1	
Rated pressure [MPa]	25							23	
Max speed [rpm]	2700								

x- seal design

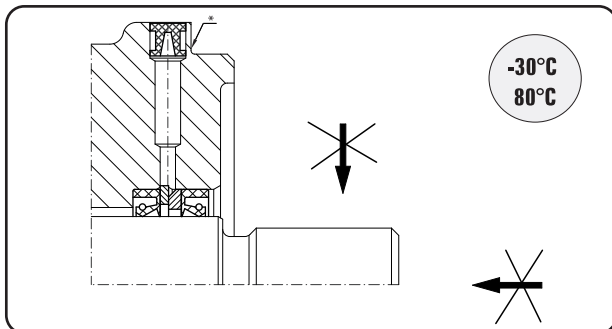
- Dimensions data
- Drive shaft
- Mounting flange
- Ports

## SEAL DESIGN / HOW TO ORDER



code A

Suitable for external drives and flexible coupling



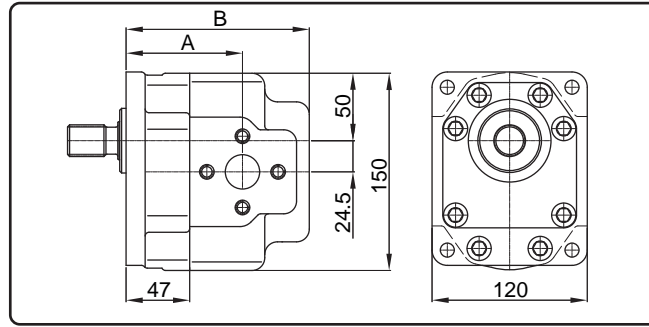
code C

Visible-bleed drilling suitable for drives with no load for direct mounting on torque converters and gear boxes

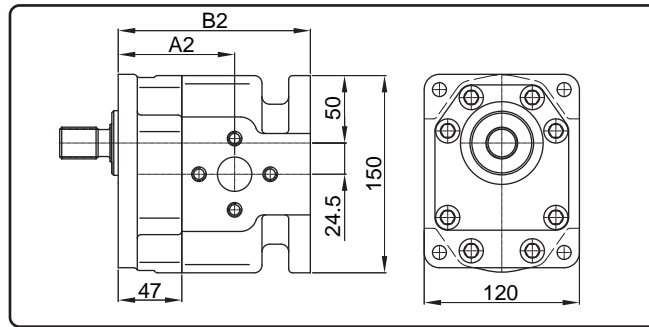
TYPE	DRIVE SHAFTS	FLANGE	PORTS	Rotation A- anticlockwise C- clockwise
Px3-20	C	9	ES	C
Px3-15	AT B Q ES AX F	2 9 11 13	ES GS B26 B2	A C
Px3-20				
Px3-25				
Px3-35				
Px3-40				
Px3-46				
Px3-55				
Px3-64				

x- seal design

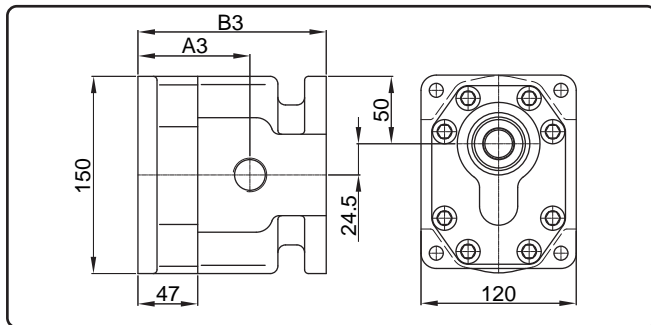




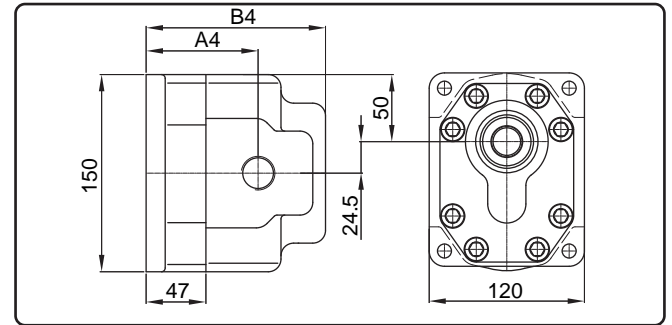
Single unit



Multiple: front unit



Multiple: intermediate unit

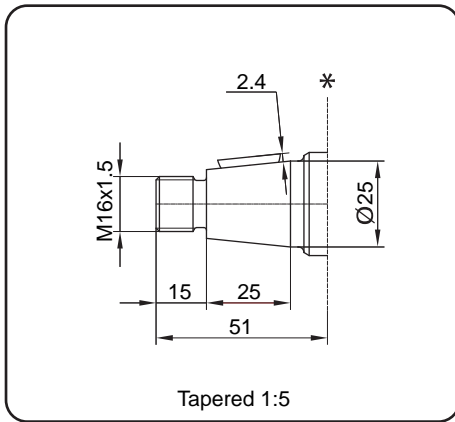


Multiple: rear unit

SIZE	A1*	B1	WEIGHT [kg]	A2*	B2	WEIGHT [kg]	A3*	B3	WEIGHT [kg]	A4*	B4	WEIGHT [kg]
PA3-15	85	122	10,5	83	131	10,7	82	128	10,7	82	121	10,5
PA3-20	88	127	10,8	88	134	11	85	131	11	85	124	10,8
PA3-26		132	11,2		139	11,4		136	11,4		129	11,2
PA3-35		135	11,4		142	11,7		139	11,7		132	11,4
PA3-40	88/91,5	138,5	11,7	88/91,5	145,5	12	85	142,5	12	85	135,5	11,7
PA3-46		144	12,2		151	12,4		148	12,4		141	12,2
PA3-55		149,5	12,7		156,5	12,9		153,5	12,9		146,5	12,7
PA3-64	95/98	149,5	12,7	95/98	156,5	12,9					146,5	12,7

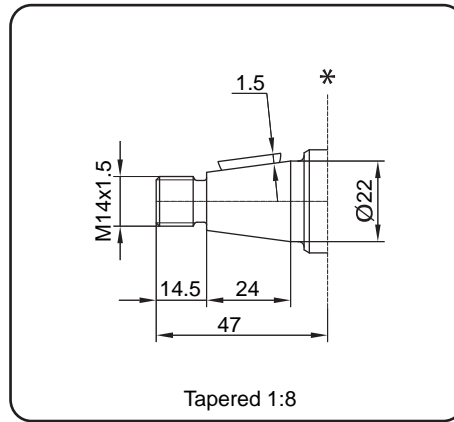
\* First number - dimensions for threaded ports  
 Second number - dimensions for flanged ports

### SHAFTS WITH KEY



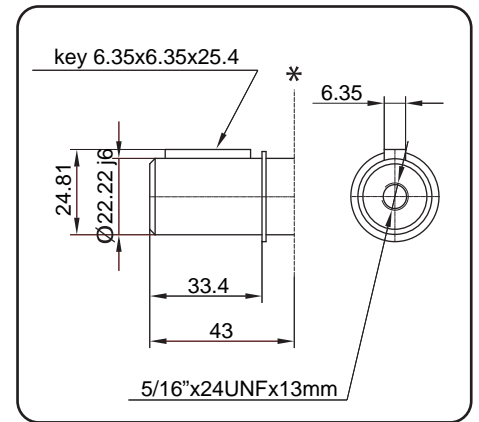
Tapered 1:5

code ES



Tapered 1:8

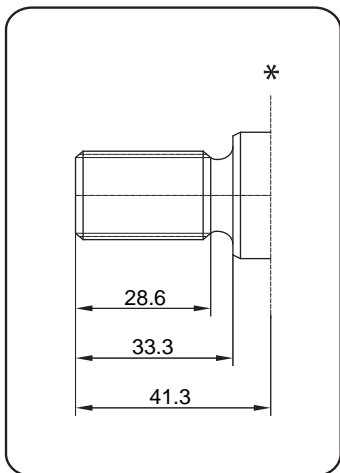
code FS



5/16"x24UNFx13mm

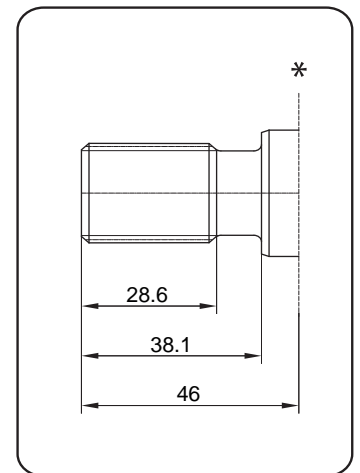
code F

### INVOLUTE SPLINE SHAFTS



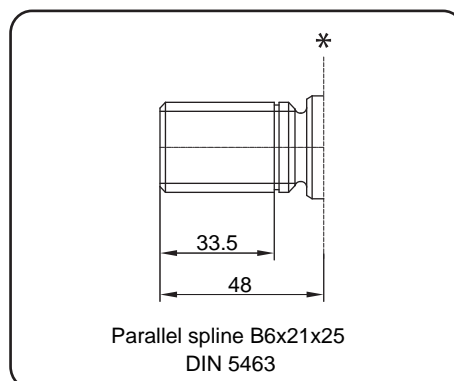
code B

	code B	code Q
size	SAE B 7/8"	SAE BB 1"
side fit	Flat root	Flat root
diametral pitch	16/32	16/32
pressure angle	30°	30°
number of teeth	13	15
major diameter	21,79/ 21,69	24,97/ 24,87



code Q

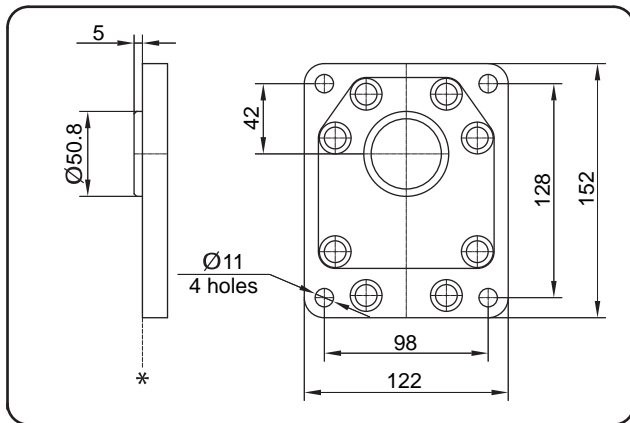
### PARALLEL SPLINE SHAFTS



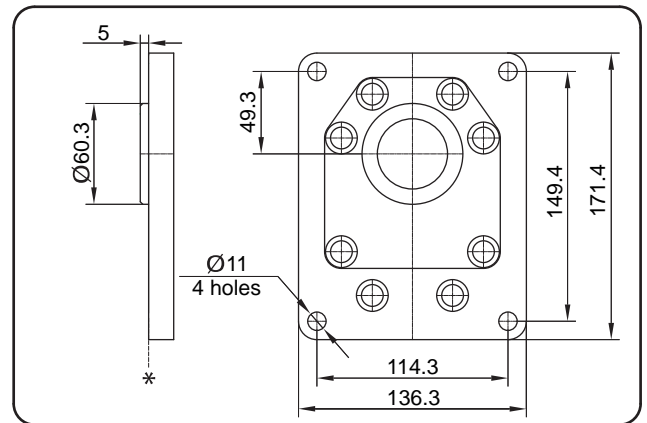
Parallel spline B6x21x25  
DIN 5463

code AT

\* standard flange mounting surface

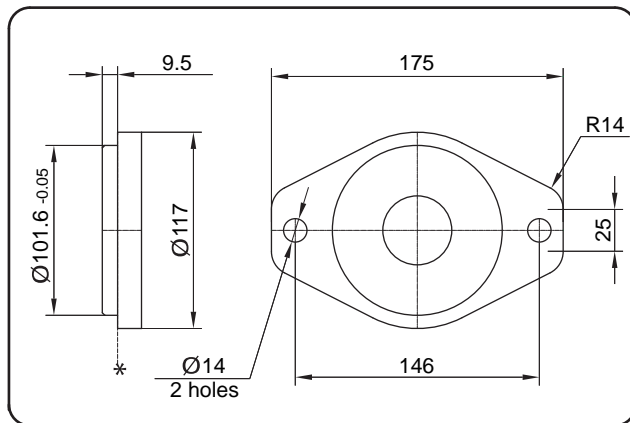


code 9

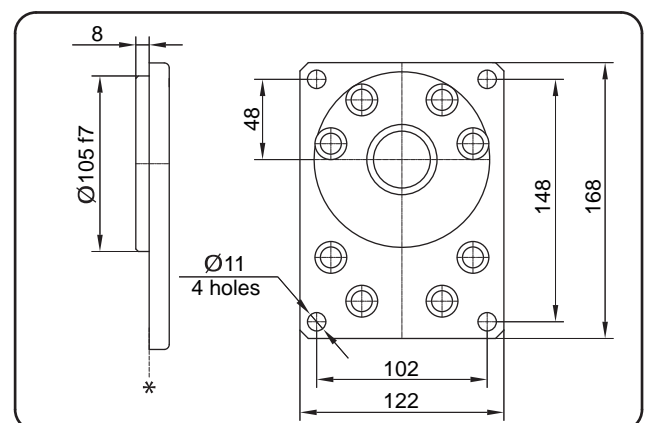


code 11

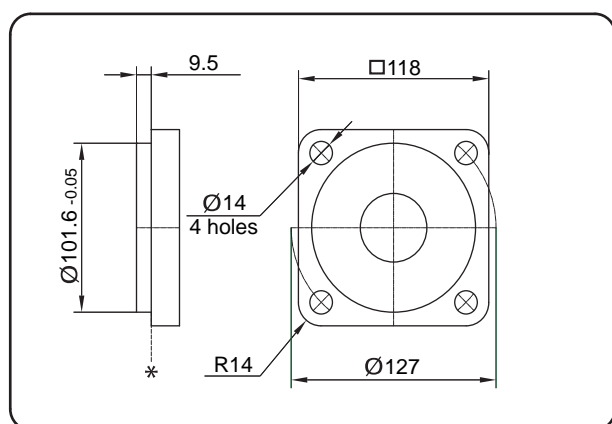
### SAE B



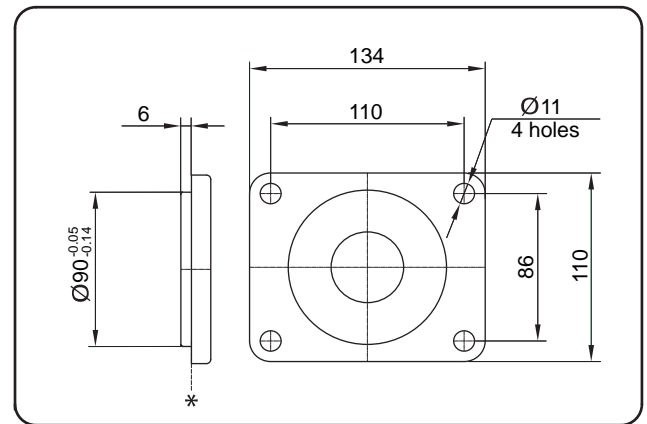
code 2



code 13



code 3



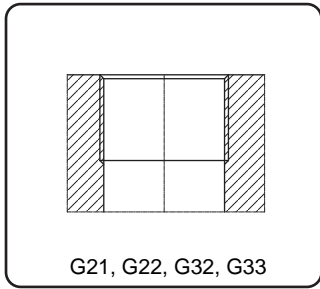
code 41

\* standard flange mounting surface

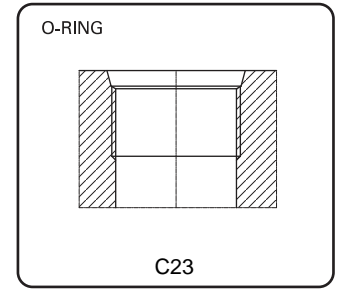
# GROUP 3

## PORTS

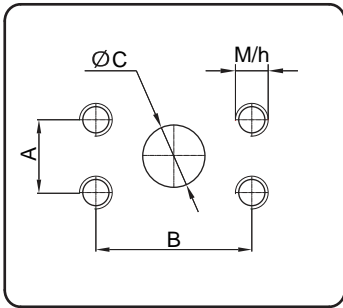
# GEAR PUMPS WARYNSKI SERIES



SIZE	INLET	OUTLET	CODE PORTS
20,26,35,40	3/4"B.S.P.P	3/4"B.S.P.P	G22
46,55,64	1"B.S.P.P	1"B.S.P.P	G33
20,26,35	3/4"B.S.P.P	1/2"B.S.P.P	G21
40,46,55,64	1"B.S.P.P	3/4"B.S.P.P	G32
20,26,35,40	M33x2 O-Ring	M33x2 O-Ring	C23
46,55,64	M42x2 O-Ring	M33x2 O-Ring	

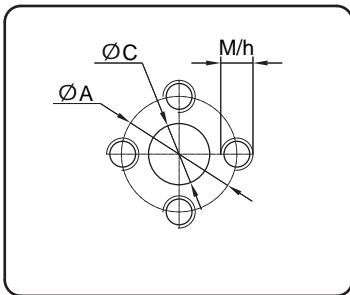


## SAE STANDARD



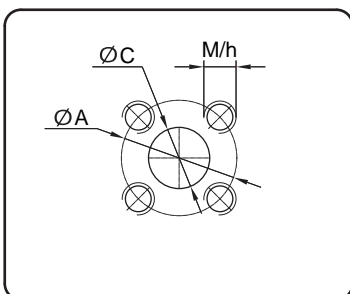
SIZE	PUMPS													
	INLET						OUTLET							
	B2		B2/B26			B26	B2		B2/B26			B26		
	M	h	A	B	C	M	h	M	h	A	B	C	M	h
15	3/8-16 UNC	17	26,2	52,4	25	M10	17	3/8-16 UNC	17	22,2	47,6	19	M10	17
20														
26														
35														
40														
46	7/16-14 UNC	17	30,2	58,7	31	M12	17	7/16 UNC	17	26,2	52,4	25	M12	17
55														
64	1/2 UNC	17	35,7	69,8	38	M12	17	7/16 UNC	17	30,2	58,7	31	M12	17

## EUROPEAN STANDARD



SIZE	PUMPS								CODE
	INLET				OUTLET				
	A	C	M	h	A	C	M	h	
15	51	27	M10	17	40	19	M8	17	ES
20									
26									
35									
40									
46	62	33	M12	17	51	20	M10	17	ES
55									
64									

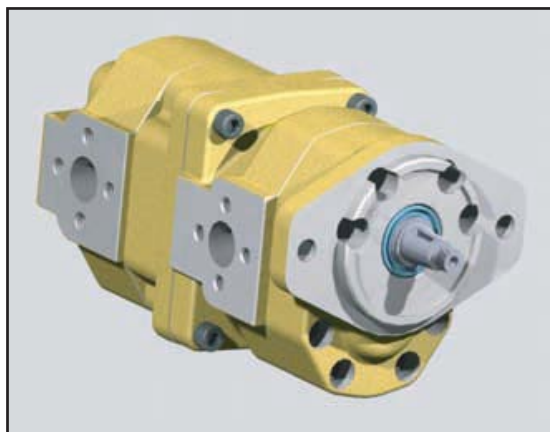
## GERMAN STANDARD



SIZE	PUMPS								CODE
	INLET				OUTLET				
	A	C	M	h	A	C	M	h	
15	55	27	M8	17	55	19	M8	17	GS
20									
26									
35									
40									
46	62	33	M12	17	51	20	M10	17	GS
55									
64									



### MULTIPLE PUMPS



- Seal design
- Dimensions data
- Drive shaft
- Mounting flange
- Ports

### HOW TO ORDER

P-PUMP	SEAL DESIGN	TYPE			DRIVE SHAFTS	FLANGES	PORTS			Rotation A- anticlockwise C- clockwise D- birotation
		First section	Second section	Third section			First section	Second section	Third section	
P	A	3-55	3-26	3-15	AT	9	C23	C23	C23	C
P	A C AJ* CJ*	3-15	3-15	3-15	AT	2	ES	ES	ES	A C
		3-20	3-20	3-20			GS	GS	GS	
		3-26	3-26	3-26	B	9	C51	C51	C51	
		3-35	3-35	3-35	Q	11	C52	C52	C52	
		3-40	3-40	3-40	ES	13	C91	C91	C91	
		3-46	3-46	3-46	FS		C23	C23	C23	
		3-55	3-55	3-55	F					
		3-64	3-64	3-64						

\*x - A standard drive shaft seal

\*AJ, CJ - common inlet